

*Hawaii Association For
Family & Community Education*

Community Action...

**Working together * Teaching *
*Volunteering * Helping Others **



2015 Annual Report

The Hawaii FCE Mission Statement

The mission of the Hawaii Association for Family & Community Education is "Living the Aloha spirit" to strengthen Individuals, Families, and Communities through Continuing Education, Developing Leadership, and Community Action

FCE is a non-profit volunteer organization with 8 councils, 28 clubs, and 319 individual and family members on the islands of Hawaii, Kauai, Maui, Molokai, and Oahu. In 1949, Hawaii FCE was officially organized in Hawaii with support from the Cooperative Extension Services of the College of Tropical Agriculture and Human Resources of the University of Hawaii at Manoa. This year members will celebrate 65 years of working in their communities to improve home and family life, develop leadership skills, and promote community action. Hawaii FCE is a member of the National Association for Family & Community Education and is affiliated with the Associated Country Women of the World, a non-governmental organization (NGO) with consultative status at the United Nations. Membership is open to all interested men, women, and children regardless of age, sex, or religious affiliation.

About the Cover

The members of Windward FCE Council are setting goals to teach their members how to attract new members through education, fellowship, fun and food! Events open to the community provide education opportunities, demonstrations by the members, and teaching a variety of skills to prospective members...

For more information visit our website at: www.hawaiifce.org

*Annual Report Prepared by Oarlene Wingate
Mahalo to Committee members: Denise Smith and Karen Hamada*



State President's Message.....

FCE is a nationwide organization made up of neighborhood clubs that provide opportunities for men, women and children to grow in knowledge to strengthen their families. In Hawaii, we continue to live our FCE creed striving for the highest ideals of home life, being a friendly neighbor, and building a peaceful home by working through our community, and country for a peaceful world. We continue to support community events, and agencies providing services in Hawaii, and offer

support to individuals who pursue education that benefits the health and welfare of the people of Hawaii. I know you will find pleasure reading about the creative ways our members volunteer their time to make Hawaii better.

Sally Bowman, President 2015 - 2016

Advisor's Message.....

The Hawaii Association for Family and Community Education (Hawaii FCE), a non-profit volunteer organization, was organized with support from the Cooperative Extension Service in 1949. Through the years, Hawaii FCE was known as:

- Hawaii Home Demonstration Council: 1949-1964
- Hawaii Extension Homemakers Council: 1965-1991
- Hawaii Association for Family and Community Education: 1992- Present



No matter what name the organization was known as, Hawaii FCE continues to make a difference in their communities through acts of kindness and volunteerism. Many members have been volunteering for decades; 50+ years is not uncommon. Hawaii FCE members have provided more than 16,151 volunteer hours in 2014 and calculated at \$22.16 per hour, it is a contribution of more than \$357,904.00. Add in material contributions of \$14,410.00 and the total contribution equals \$372,314.00 towards a better Hawaii!

In 2014, Hawaii FCE members touched the lives of 30,831 people and if every seat was occupied in the Stan Sheriff Center at the University of Hawaii at Manoa, the outreach would fill the Stan Sheriff Center approximately three times. Wow! Congratulations in being a strong voice in promoting a healthier and better life for Hawaii's individuals, families, and communities! I applaud the efforts of Hawaii FCE members who dedicate their time, talents, and energy in making a difference for Hawaii's families!

Joan Chong, Extension Educator



Financial Statement

January 1 – December 31, 2015

Current Assets:

Cash in Checking Account	\$27,207
Savings Account & Certificate of Deposits	27,703
History Books/Quilt Books & Sate Pins	<u>692</u>
TOTAL	\$56,102

Current Liabilities:

0

TOTAL ASSETS, LIABILITIES & FUNDS BALANCE

\$56,102

Support and Revenues:

Membership Dues	\$4,377
Donations, Fundraising, & Grants	<u>6,879</u>
TOTAL	\$ 11,256

Expenses:

Program Development & Implementation	\$1,936
Leadership Development	<u>8,876</u>
TOTAL	\$10,812

Excess of Revenue Over

Expenses \$444

2015 Hawaii FCE State Board

Executive Officers

President	Sally Bowman
Vice President	Martha Yamada
Secretary	Katherine Uehana
Treasurer	Bernie Tangalin
Past President	Milo Ferreira
Parliamentarian	Oarlene Wingate
Hawaii Advisor	Joan Chong

Education Committee Chairs

Health Issues	Dixie Dumaran, M.D.
Home & Community Environment	Elaine Sumida
International Leadership	Denise Smith
Youth Education	Melinda Ishii
	Lynn Nagata

Committee Chairs

Bylaws	Dr. Jacqueline Maly
Finance	Bernie Tangalin
Trimble Foundation	Amy Bugado
Trimble Distribution	Martha Yamada
Nomination	Katherine Uehana
Education	Martha Yamada
Ways & Means	Helen Wagner
Membership	Patricia Kubo
Newsletter	Denise Smith
2015 Convention Chairs	Martha Yamada
	Elizabeth Salfen
Annual Report	Oarlene Wingate

Council Presidents

Hamakua	Dana Morifuji
Hilo	Elizabeth Salfen
Kauai	Margo Hashimoto
Kona	Gay Okada
Maui	Pasita Pladera
Molokai	Gladys Brown
South Oahu	Susan Yee
Windward Oahu	Ruth Haitzuka

2015 National FCE Winner of the “Spirit of Family Community Leadership” Award



Katsuko (Kats) Enoki is an FCE member from Pukalani, Maui. She received Family Community Leadership training at several National FCE conferences and at workshops in Hawaii. She used the leadership training as Hawaii State Vice President in 2005-2006 and then as President in 2007–2008) and in other positions at state level and in her council and club. In 2012, Kats served as a co-teacher for the “Powerful Tools for Caregivers” workshops which were held on Maui. Kats, as a member of a bible study group, stepped in to offer her home and facilitate the small group when their leader unexpectedly

passed away. Instead of didactic presentations, Kats introduced the concept of facilitation and group process. She provided education and leadership using bonding exercises, conflict resolution, delegation, teaching, and listening. The members were willing and eager to help feed the homeless and raise funds for missionaries. Members came from a variety of churches including Pookela Church, Baptist, Lutheran, Catholic, Mormon, and 7th Day Adventist. Today there are 21 members ranging in age from 57 to their 90’s. The meeting site is now at a church fellowship hall due to the size of the group. The group shops, cooks, and serves one dinner annually to the homeless. Members help with the monthly rummage sales and annual bazaar. Funds from one monthly rummage sale are designated to help fund missionaries. Initially Kats wanted to keep the group from abandoning and now she sees the members grow spiritually, studying and learning the Bible, thanks to her FCL skills!

Hawaii FCE’s 2015 Heart of FCE Winner

FLORENCE “FLOSSIE” FERGERSTROM



A woman of many talents and a heart of gold, “**Flossie**” **Fergerstrom** has for 67 years been an exemplary FCE member. She has shared her learned skills with her family, her community, and with her East Hawaii FCE family. She joined FCE in 1948 as a young woman and later used the skills taught by the extension agents to help stretch the family dollar and make a great life for her husband and 3 children. After her husband suffered a stroke and became disabled,

Flossie cared for him at home for 12 years until his passing. During that time it was difficult for her to attend many of the FCE functions but she would host at least one club meeting a year at her home so that she could still participate. Her contributions to the local FCE craft fairs came in the form of wood work items which she made in her home workshop. She shared these skills with her club members also – teaching them how to saw, sand, and varnish little wooden angels, paper towel holders, planter boxes and other items. Flossie shines as an FCE angel!

EDUCATION



Members of Hilo Council donated **Books for Newborns** along with quilts, toys and other items to the Pediatric Ward of Hilo Hospital. Books for Newborns is an annual project of the National Association for Family and Community Education to encourage new moms and dads nationwide to read to their children!

CHARACTER COUNTS! promotes the “Six Pillars of Character” developed by the Josephson Institute. An annual Essay and Artwork Contest is held nationwide for 4th grade students and focuses on one of the Six Pillars: Citizenship, Fairness, Responsibility, Trustworthiness, Caring, and Respect. This year’s State winners are: First Place: **Marissa Tasaki**, Emmanuel Lutheran School, Maui Council was awarded \$100. She wrote about her friend, Taylor, and how Taylor helped her to be more responsible. Second Place: **Joshua Tsugawa**, Kapunahala Elementary School, Windward Oahu Council was awarded \$75. His essay explained that his friend Damien encouraged him and he was able to raise his grades by being more responsible. Third Place: **Nicolle Clair Patengga**, Ele`ele School, Kauai Council was awarded \$50 for her essay “There are many ways I can be responsible” sharing her thoughts on responsibility.



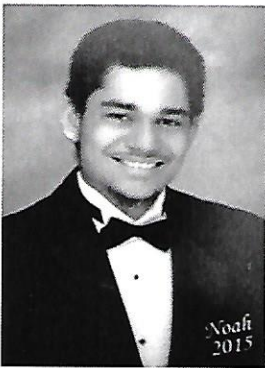
This year, Kauai FCE Council awarded six winners who were selected by 5 judges from a total of 147 CHARACTER COUNTS! 4TH grade entries. FIRST Place- Nicolle Pattenga from Ele`ele Elementary School received \$75; SECOND Place - Emma Seres from Kapaa Elementary School received \$50, and THIRD Place - Janine Salud from Wilcox Elementary School received \$25. Nicolle’s entry was entered in the state contest and won 3rd place.

←

Maui FCE Awards \$10,000 in Scholarships

With this year's \$10,000 award, Maui FCE will have given \$140,700 to 115 students since 1979. These scholarships were made possible from the sale of Maui UE cookbooks which are no longer printed.

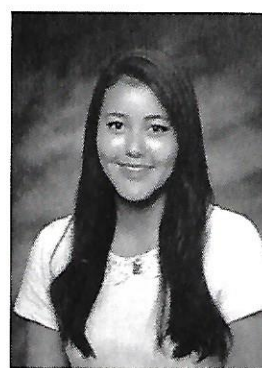
Applicants must be a graduating senior from a high school on Maui, a resident of Maui for the last 5 years, maintained a 3.0 cumulative grade point average on a 4.0 scale, demonstrate financial need, and exhibits good character in the community and school. The student must plan to attend an accredited 2 or 4 year post-secondary education institution on a full time basis. This year, the winners received \$2000 each: **Noah Hoopai Feliciano**, Hana High School will attend the University of Hawaii at Hilo. **Shantel Longboy**, Maui High School will attend Colorado State University. **Natasha Salamack** from Seabury Hall will attend University of San Diego. **Keoni Frampton** from Kamehameha Schools Maui will attend Colorado State University. **Liana Tanaka**, (not pictured) Maui High School will attend Pacific University.



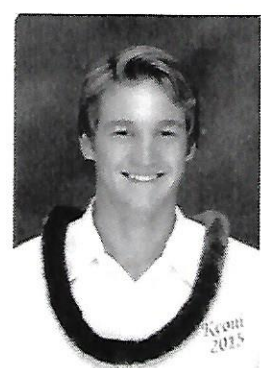
Noah Hoopai Feliciano



Shantel Longboy



Natasha Salamack



Keoni Frampton

The Trimble Foundation Scholarship

Our Trimble Foundation was established in 1974 in memory of Alice P. Trimble, Hawaii's first State Leader with Cooperative Extension Service, to provide scholarships to individuals and grants to non-profit organizations for the betterment of the people of Hawaii. Applications can be found on the hawaiiifce.org website and are due by July 31st.

In 2015, Natsumi Yamasato received \$2500. She is currently a part-time teacher at Wilcox School where she has found teaching to be her passion. Natsumi has an engineering degree from Japan and is currently pursuing a Master's Degree in Education.



NAFCE Conference ~ July 2015 Kansas City, MO

HAFCE President Sally Bowman (center) presenting a check, donated by five councils from Hawaii, to Kristy Childs (R), advocate for Victoria's Victory, the Human Trafficking project that NAFCE has selected to assist. Looking on is Bonnie Teeple (L), NAFCE President.

INTERNATIONAL



Dress a Girl Around the World Project

Dress a Girl Around the World Project partnered again this year with "Operation Christmas Child - Love in a Shoebox" to help give dresses to little girls and shorts to little boys sizes 2 through 8. Members from Kona and Hilo on the Island of Hawaii contributed dresses and shorts to 17 countries through many different Missionaries. Thanks to the volunteer work of area women and families, little girls and boys around the world are getting what could be their first handmade dress or pair of shorts. Village Pastors tell us that children wearing these give the appearance that they are well-cared for and may discourage would-be predators. A label is attached on the outside of each dress, sending an additional message that each child is under the care of an organization giving him/her added protection from those who would harm them.



1,000 LEI OF ALOHA



Kauai Association for Family and Community Education undertook a project to share Hawaii's ALOHA with children and adults in Okinawa. The members and friends made 1,300 yarn leis to be given to Special Olympic athletes in Okinawa. Pictured receiving the shipment of lei, is KAFCE president Margo Hashimoto's son, Capt. Stan Hashimoto (right), who is the chairman of the Kadena Special Olympics held in October.

Celebrating International Day

Kauai FCE members celebrate International Day with a cornucopia of ethnic dishes from different countries including Spain, Mexico, Japan, and the Philippines. They shared information about the country, the music, the culture and the food.

CARING FOR OUR COMMUNITY

Hamakua FCE Members partnered with Lions Club in monthly roadside cleanup, promoting a healthy BLUE ZONE lifestyle, assisted the Salvation Army with Christmas Bell Ringing, marched in the St Patrick's Day Parade, and provided flowers and table decorations for the community hospital on Mother's Day.



Maui members packed 50 care bags for the Women Helping Women Facility in August. Bags were sewn and included various toiletry items. Bags were also made for children with coloring books and crayons.



Windward Oahu assisted Family Promise in Kailua. Their mission is helping families during their transition to stable shelter. Volunteers provide nightly shelter and meals, moral support and resources. Local Foundations provide washing machines, dryers, computer equipment and vans for transportation. Monetary donations were collected from members at all 20 Windward Oahu meetings - Board, Council and PLT's. Types of items included clothes, toiletries, school supplies, paper goods, and food. Members also donated clothing and quilts. Over 777 children and their parents received assistance in 2015.

Maui members planted over 50 containers of succulents and delivered them to various care facilities.



Hilo Council members assemble Thanksgiving baskets for families in need. ↑

CONTRIBUTIONS FOR A BETTER HAWAII 2015

Program Area	Hours Volunteered	Persons Reached	Contributions Calculated at \$23.56 per hr.
Leadership Skills	2088	715	\$49,193
<i>Installation of Officers, Planning Club Meetings, Conducting Workshops & Meetings</i>			
Health Issues	1,403	393	\$33,055
<i>Exercise, Fall Prevention, Relax & Restore, Enhanced Fitness, Blue Zone Project, Reducing Salt, Hands Only CPR</i>			
International Projects	23,870	2,744	\$562,377
<i>Dress a Girl Project, Assist Hawaii/Japanese Center, Assist Special Olympics in Okinawa, Country Reports, Maui International Day</i>			
Character Counts! sm Essay & Artwork Contest	158	434	\$3,722
<i>Character Building Lessons – Coordinating the National CHARACTER COUNTS! sm Essay & Artwork Contest for 4th grade students</i>			
Youth Education	356	10,522	\$8,387
<i>Books for Newborns, Donate Scholarships, Children & Youth Day at the Capitol, Assist with Midsummer Night's Gleam</i>			
Home & Community Environment	3,519	7,256	\$82,908
<i>Recognition Event, Community Service Projects, Feed the Hungry, Project Graduation, Domestic Violence, Soil Study, Aging in Place Event, Rummage Sale</i>			
Building Membership	1,245	1,704	\$29,332
<i>Distributing membership brochures at FCE Fair & Windward Community College Ho'olaulea,</i>			
Program Coordination & Organizational Maintenance	6,793	8,863	\$160,043
<i>Planning Educational Programs, Publishing State & Local Newsletters, Civic Engagement, Participating at State and National FCE conferences, Publishing Annual Report</i>			
Total Hours/Value	39,432	32,631	\$929,017
Total Material Contributions			\$219,424
Total Contributions			\$1,148,441

The 5 R's: Reduce, Reuse, Recycle, Reject, and React

In February, Windward FCE clubs joined forces with South Oahu FCE clubs to present workshops at Urban Gardens on the R's (Reduce, Reuse, Recycle, Reject, React) to five different public elementary school classes with approximately 160 students. Using posters, various items made from recycled items were used to explain the importance of the 5 R's. There were 13 FCE members who participated in this event. Students completed a hands-on activity using recycled pencils.





Hawaii Association for Family & Community Education
Sally Bowman, President P.O. Box 7166 Hilo, HI 96720
CES Office 79-7381 Mamalahoa Hwy., Kealahou, HI 96750