

*Hawai'i Association For  
Family & Community Education*

*Continuing Education with FCE*



*2013 Annual Report*

## ***The Hawaii FCE Mission Statement***

*The mission of the Hawaii Association for Family & Community Education is “Living the Aloha spirit” to strengthen Individuals, Families, and Communities through Continuing Education, Developing Leadership and Community Action.*

FCE is a non-profit volunteer organization with 8 councils, 34 clubs and 358 individual and family members on the islands of Hawaii, Kauai, Maui, Molokai, and Oahu. In 1949, Hawaii FCE was officially organized in Hawaii with support from the Cooperative Extension Services of the College of Tropical Agriculture and Human Resources of the University of Hawaii at Manoa. This year members will celebrate 65 years of working in their communities to improve home and family life, develop leadership skills, and promote community action. Hawaii FCE is a member of the National Association for Family & Community Education and is affiliated with the Associated Country Women of the World, a non-governmental organization (NGO) with consultative status at the United Nations.

## **About the Cover**

The Hawaii Association for Family & Community Education strongly promotes Continuing Education by offering scholarships to community members, students, and FCE members. The recipients of the 2013 Trimble Foundation scholarships were (left to right) Jody Gonzalves, Althea Bongolan, and Calvin Anthony Cabunoc, all from Maui.

For more information visit our website at: [www.hafce.org](http://www.hafce.org)

*Annual Report Prepared by Oarlene Wingate & Denise Smith*



## State President's Message

Aloha! As a second generation FCE member, I have grown up with the philosophy of learning and then sharing my knowledge with others. One of the ways that FCE has consistently shared the opportunity of learning is by providing scholarships to our fellow members, community agencies who offer services in our neighborhoods, and to students of all ages who wish to improve their lives by continuing their education. I hope you will enjoy reading about them and how Hawaii FCE accomplishes its goal of Continuing Education.

*Milo Ferreira*

President 2013 – 2014



The Hawaii Association for Family and Community Education (Hawaii FCE) has been a vital resource in extending the outreach of the University of Hawaii at Manoa, College of Tropical Agriculture and Human Resources, Cooperative Extension Service's programs to address important community needs. FCE members care and give from the heart to assist in the development and implementation of educational programs to meet the needs of Hawaii's families and to make a difference in their communities. Hawaii FCE provides opportunities for people to:

- Learn current information on family issues, health issues and other timely matters in a supportive environment and shared experience
- Improve home and community life
- Develop leadership and life skills
- Conduct educational programs and projects that enhance family and community life
- Build partnerships within their communities

I applaud the efforts of FCE members working collaboratively with other organizations and businesses to deliver educational programs to address healthy living, personal and home safety, environmental stewardship, finances, and leadership development to enhance and strengthen the life skills people need to improve their quality of life in Hawaii.

*Joan Chong*

Extension Educator and Hawaii Island Advisor



## Financial Statement

Cash Basis – December 31, 2013

### Current Assets:

Cash in Checking Account	\$24,321
Savings Account & Certificate of Deposits	31,942
History Books/Quilt Books & Sate Pins	<u>612</u>
TOTAL	\$56,875

Current Liabilities: 0

**TOTAL ASSETS, LIABILITIES  
& FUND BALANCE** \$56,875

### Support and Revenues:

Membership Dues	\$4,623
Donations, Fundraising, & Grants	<u>9,576</u>
TOTAL	\$14,199

### Expenses:

Program Development & Implementation	\$1,690
Leadership Development	<u>8,754</u>
TOTAL	\$10,444

**Excess of Support &  
Revenue Over Expenses** \$3,755

## 2013 Administration

### Executive Officers

President	Milo Ferriera
Vice President	Sally Bowman
Secretary	Katherine Uehana
Treasurer	Susan Yee
Past President	Patricia Kubo
Parliamentarian	Dr. Jacqueline Maly

### Education Committee Chairs

Health Issues	Martha Yamada
Home & Community Environment	Ruth Yamamura
International	Lillian Tim Sing
Leadership	Margaret Cambra
Youth Education	Laurie Ho

### Committee Chairs

Bylaws	Dr. Jacqueline Maly
Finance	Susan Yee
Trimble Foundation	Patricia Kubo
Trimble Distribution	Oarlene Wingate
Nomination	Katherine Uehana
Education	Sally Bowman
Ways & Means	Gay Okada
Membership	Bernie Tangalin
Newsletter	Denise Smith
2013 Convention Chair	Ruth Haitsuka
Annual Report	Oarlene Wingate & Denise Smith

### Council Presidents

Hamakua	Dana Morifuji
Hilo	Elizabeth Salfen
Kauai	Bernie Tangalin
Kona	Gay Okada
Maui	Margaret Raymond
Molokai	Gladys Brown
South Oahu	Marian Matsuda
Windward Oahu	Ruth Haitsuka



**Hawaii Heart of FCE**

Gladys Fujiuchi  
*Kauai FCE*

This award pays special tribute to a member who has made a difference in her community through FCE. This year Gladys Fujiuchi was recognized as Hawaii’s Heart of FCE at the National FCE conference in Fargo, North Dakota.

A 47 year FCE member, Gladys served as president of Kauai FCE for two terms, chaired the Trimble Distribution Committee, co-chaired three state conventions on Kauai, was club president three times and is the editor of the Kauai FCE Newsletter. She is there when in need of an emcee, song leader or skit presentation. She is choir director at her church, volunteers at the Cancer Society, Kauai Museum, and chaired the Retired Senior Volunteer Program board. To keep fit and keep up with all her activities, she takes classes in tai chi, yoga, and enhanced fitness. She has traveled extensively since becoming a widow, breast cancer survivor and having two knees replaced.



**National Association for  
Family and Community  
Education’s Spirit of FCL**

**Award Winner**

LaVerne “Lei” Chow  
*Windward Oahu FCE*

The Spirit of FCL Award is given to an individual or group who has taken Family Community Leadership (FCL) training and has provided education and leadership to the community.

LaVerne Leilani “Lei” Chow, 81 years young, truly exemplifies the Spirit of FCL. After facing many physical and personal challenges, LaVerne completed over 60 hours of FCL training in 2002. To complete this training, she flew from Honolulu to attend sessions for three weekends on the Big Island. Since her training, Lei has contributed to a variety of groups. Lei actively participated in lobbying for the passage of the “Na Tutu” bills in 2003 and 2005. The passing of Act 99 and Act 2008 enabled grandparents who are raising their grandchildren to enroll them in school and to sign consent forms for health related issues. She assisted with the planning and organization of a series of lunchtime programs and speakers on various topics for the community. She has been involved in the Young Ladies Institute, which does charitable work, by serving as Institute Deputy and as District Deputy. Lei has also lent her skills to FCE by serving as state secretary. Her personal mission, in her own words, “is to involve others, and to educate and help those who have gone through adversity”.

*Members Honored for Years of Service*

**50 Years**

*Betty Jane Pa & Rose Marie Pohina ~ Hilo Council*

**60 Years**

*Ann Nathaniel ~ Hilo Council*

**65 Years**

*Florence “Flossie” Fergerstrom & Masae Saito ~ Hilo Council*

## **FCE**

### **Supports Continuing Education**

#### **The Trimble Foundation**

Since its beginning in 1949, Hawaii FCE has provided education for its members in non-traditional out of classroom settings. The members, in turn, have shared their acquired knowledge with their families and their communities. The members also wanted to provide an opportunity for families and communities to experience a traditional institution education. In 1974, the Trimble Foundation was established. It is named in memory of Alice P. Trimble who was one of the early Cooperative Extension Service state leaders who helped grow the Hawaii FCE organization (formerly University Extension clubs). The foundation awards funds to individuals and organizations. An individual must be a resident of Hawaii for a minimum of 5 years and be enrolled or planning to enroll at a Hawaii educational institution. His or her focus of education must be in the fields of Education or Human Services. An organization that applies for funds must be an established non-profit organization in the state of Hawaii for 5 years and provide for the maintenance and betterment of public health and welfare.

The funds for the foundation were raised by assessment and fundraising activities by the FCE membership. The principal is currently at \$61,708 with private and public donations continuing to increase the principal. The amount of the grants awarded is based on the amount of interest available. A distribution committee annually determines the eligibility of applicants and amounts to be awarded. The committee members for 2013 were Oarlene Wingate, Hawaii (chair), Katsuko Enoki, Maui (vice chair),

Lenore Klass, Kauai (secretary), Marian Matsuda, Oahu, Pat Kubo (Past president – Hawaii FCE), Joan Chong (CES advisor) and Meleen Corenevsky (Bank of Hawaii trustee).

In 2013, three Maui students were awarded \$1000 each from the Trimble Foundation to continue their education. Calvin Anthony Cabunoc, a 2013 Baldwin High School graduate is studying liberal arts in pursuit of a pharmaceutical degree. Jody Gonzalves will major in interdisciplinary studies with emphasis in human relations. Althea Bongolan plans to become a registered nurse and help the sick and elderly get the most out of life. She will be pursuing her education to achieve a Bachelor of Science in nursing degree.



***Althea Bongolan, Calvin Cabunoc, & Jody Gonzalves***



## State and Council Scholarships

The Hawaii FCE state organization and some of the local councils offer scholarships to its members who are first time attendees to the National FCE annual conference, and/or the Hawaii state annual convention. The educational benefits of attending workshops and speaker sessions at these events are an asset to the members and their communities. Funds are also available for members who are attending leadership development workshops, either with Family Community Leadership (FCL) training or with other community organizations.



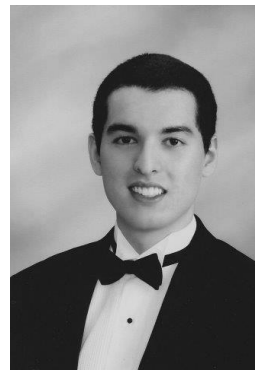
**2013 First Time convention attendees**  
*L to R: Wanda Lew, Natalie Oda-Lee, Susan Stewart, Alice Yamashiro, Alfred Chow, and Carolyn Lum*

## Maui FCE Scholarships

Maui FCE council, which is currently comprised of 60 members, has offered generous scholarships to graduating seniors of Maui high schools for the past 34 years. The funding for these scholarships has come from the sale of a series of six cookbooks that were written by the Maui FCE members starting in the early 1960s. All the recipes are contributed by members. A distribution committee determines the eligibility of the applicants and how much they receive. To the right are the five scholarship recipients for 2013 who were awarded \$2000 each.



**Alicia Ballesteros**  
*St. Anthony H S*  
*Attending Gonzaga U.*  
*Maj: Nursing*



**Angelo Sanakli**  
*Maui H S*  
*Attending Syracuse U.*  
*Maj: Int'l Relations/  
Political Science*



**Jeannie Ramelb**  
*Lahainaluna H S*  
*Attending UH -Manoa*  
*Maj: Mathematics*



**Kaili Mossman**  
*Kamehameha H S Maui*  
*Attending Georgetown U.*  
*Maj: Business/Economics  
& Asian Studies*



**Lavinia Sagario**  
*Maui H S*  
*Attending Seattle U.*  
*Maj: Biology (pre-med)*

## FCE Supports Communities

### Quilts for Child Welfare Services

The Big Island club Hoaloha FCE members donated 14 quilts and 88 toiletry kits to the Child Welfare Service (CWS) in Hilo. Ten of the quilts were made by the Hilo FCE quilting group that meets once a month. Children taken from their homes due to abuse or neglect are often removed with very few, if any, personal belongings. Thanks to FCE, 14 children will have a warm quilt of their own.



*L to R: Shirley Ito, Ella Freitas, Karen Hamada*

### CHARACTER COUNTS! sm Essay and Art Contest

All fourth grade students, state wide, are eligible to compete in the annual CHARACTER COUNTS! sm Essay & Artwork contest. This year's theme was Trustworthiness and the state level judging was held in March 2013. The judges were two former school teachers and longtime FCE members, Edith Ushio and Sanae Morita. The first place winner was Kaiola Lingaton, who attends Kapa'a Elementary School on Kauai. Prizes awarded were First place ~ \$100, Second Place went to Deston Corpuz, Kapunahala Elementary School of Windward Oahu ~ \$75, and Third place went to Mya Batac, Waialae Elementary School of South Oahu ~ \$50. Kaiola Lingaton's entry was forwarded for judging at the National FCE level.



*Kailoa Lingaton and teacher Mrs. Yama-Gokan*

### Books for Newborns

FCE believes that reading to children should begin early. Books for Newborns are donated by members and given to new parents at local hospitals. Hilo Council collected 58 books, 5 coloring books, and 3 activity pads for donation to the Hilo Medical Center for distribution to parents of newborns to encourage them to start reading to their children at birth. Council President Liz Salfen and Ho'ike Club President Elaine Fukui presented the books to Lori Roger, Executive Director of Hilo Medical Center; Alisha Alip, RN Obstetrics Unit; and Joan Denn, RN Obstetrics Unit.



*(Left-right) Lori Roger, Executive Director of Hilo Medical Center; Alisha Alip, RN Obstetrics Unit; Elaine Fukui of Ho'ike FCE; Liz Salfen, President, Hilo FCE Council; and Joan Denn, RN Obstetrics Unit*



## Dress a Girl Project

The Dress a Girl Around the World project believes that if each young girl in the developing countries has a dress to wear, she will gain dignity and her chances of safety and opportunity will increase. Hawaii FCE took on this challenge as a state project for 2013. Members sewed simple dresses from donated fabric and hundreds of dresses have been shipped to the Philippines, India, and Cambodia.



*Members of Kauai FCE's Kukuioolono Club, showing their Pillow Case dresses they sewed for the Dress a Girl Around the World project. (L to R ~ Nancy Soares, Dorothy Higuchi and Haruko Otsubo)*



## Urban Gardens – “Let’s Plant Seedlings”

Toilet tissue rolls collected by FCE members on Oahu, were used to place seedlings grown by Imiola FCE Club and Hui O’Makani FCE Club’s members. Hui O’Koolau and Kahaluu clubs joined in by assisting these two clubs with the activity in June at the Pearl City Urban Garden Center. The rolls were collected by all clubs, cut on one end and folded in and taped so the potting soil and seedlings would not fall out. These containers were then taken home, with their

seedlings, and placed directly into the participant’s gardens as they are biodegradable. Approximately 80-100 visitors participated in this fun, easy, and enjoyable project.



*Seedlings placed inside toilet tissue rolls*

## Youth Day at the State Capitol

Thousands and thousands of people attended Youth Day at the State Capitol building in October. Keiki and their parents got to do hands on activities and spend quality family time together. FCE members from Windward Oahu FCE Council manned their station and demonstrated how to make yarn flowers using a plastic fork. They also promoted the Na Tutu coalition that has sponsored legislation to assist grandparents and kinship caregivers who are raising their grandchildren. The legislation has helped them gain rights that enable their families to lead more comfortable lives under sometimes stressful situations.



*Pictured are Jackie Chong, Pat Kubo and Jeanette Pang.*

## CONTRIBUTIONS FOR A BETTER HAWAII 2013

Program Area	Hours Volunteered	Persons Reached	Contributions Calculated at \$22.16 per hr.
<b>Leadership Skills</b>	<b>1,806</b>	<b>22,623</b>	<b>\$40,021</b>
<i>FCL Training, Candidate's Night, Installation of Officers, Planning club meetings</i>			
<b>Health Issues</b>	<b>508</b>	<b>253</b>	<b>\$11,257</b>
<i>Learning about Nutrition, Hospice, Healthy Habits, Strokes, E. coli, Breast Cancer, and Dementia</i>			
<b>International Projects</b>	<b>1,808</b>	<b>1,117</b>	<b>\$40,065</b>
<i>Dress a Girl Project, Learning about the cultures of Iran, India, and Cambodia, Women of the World</i>			
<b>Character Counts! sm Essay &amp; Artwork Contest</b>	<b>200</b>	<b>11,342</b>	<b>\$4,432</b>
<i>Character Building Lessons – Coordinating the National CHARACTER COUNTS! sm Essay &amp; Artwork Contest for 4<sup>th</sup> grade students</i>			
<b>Youth Education</b>	<b>510</b>	<b>787</b>	<b>\$11,301</b>
<i>Books for Newborns, Sponsor Lego Contest at County Fair, Working with 4-H programs, Ag Day at Urban Garden Center</i>			
<b>Home &amp; Community Environment</b>	<b>2,902</b>	<b>4,226</b>	<b>\$64,308</b>
<i>Aging in Place, Quilting, Donating Food Baskets, Planting to Attract Bees &amp; Butterflies</i>			
<b>Building Membership</b>	<b>13</b>	<b>750</b>	<b>\$288</b>
<i>Distributing membership brochures at FCE Fair, Ho'olaulea, and Youth Day at State Capitol</i>			
<b>Program Coordination &amp; Organizational Maintenance</b>	<b>8,997</b>	<b>10,274</b>	<b>\$199,374</b>
<i>Planning Educational Programs, Publishing State &amp; Local Newsletters, Civic Engagement, Participating at State and National FCE conferences</i>			
<b>Total Hours/Value</b>	<b>16,744</b>	<b>51,372</b>	<b>\$371,047</b>
<b>Total Material Contributions</b>			<b>\$24,303</b>
<b>Total Contributions</b>			<b>\$395,350</b>

## FCE CREED

*I believe in striving for the highest ideals of home life by having a sound body, a clear mind and a generous spirit.*

*I believe in friendly neighborliness and understanding of ideas and customs of races that are different from my own.*

*I believe in building a peaceful home, working through my community and country for a peaceful world.*



*Alice Clark, one of three authors of the FCE Creed, was made an honorary FCE member in 2013*



Hawaii Association for Family & Community Education  
Milo Ferreira, President P.O. Box 354, Honoka'a, HI 96727  
CES Office 79-7381 Mamalahoa Hwy., Kealahou, HI 96750